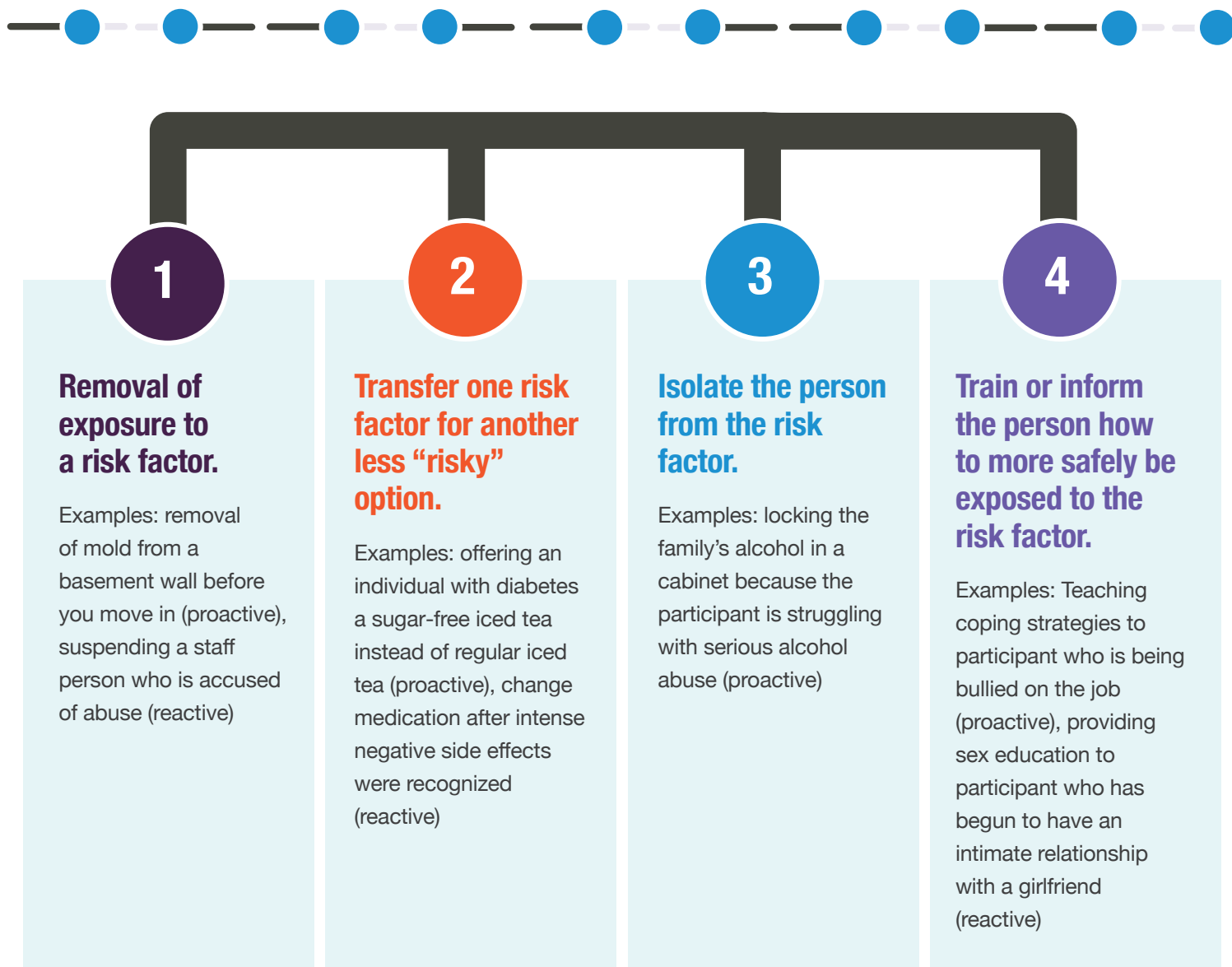


PERIODIC RISK EVALUATION (PRE): 4 STRATEGIES TO MITIGATE RISK:



Service
Guidance
Document 4



The PRE was developed to assess risk level of adults with autism over the age of 21 who are served by programs overseen by Pennsylvania’s Department of Human Services, Office of Developmental Programs, Bureau of Supports for Autism and Special Populations (BSASP) and may not accurately assess risk levels of other individuals with autism. If the PRE is used to assess risk levels of other individuals with autism, the results may not be able to be interpreted or be used to inform clinical treatment delivery. Additionally, the PRE captures historical information and should not be used as a definitive predictive tool for future behavior and risk domain experiences.

Please submit questions regarding this Service Guidance Document to BSASP at RA-basprovidersupprt@pa.gov

This resource was developed for the Department of Human Services, ODP, Bureau of Supports for Autism and Special Populations (BSASP) by the ASERT Collaborative.